

RM101-OOB

M.2 Out Of Band Module Compact BMC
Peripheral

A hardware module that provides secure Out-Of-Band device monitoring and management functions over the connected edge system.



KEY FEATURES

- ARM926EJ-S microprocessor embedded
- Low power consumption of less than **0.5 W**
- Built-in **Out-Of-Band (OOB)** remote management including remote power on/off, remote hardware monitor, remote BIOS setup, remote BIOS update and optional remote OS recovery
- Optional wireless connection (WLAN, WWAN) with **EXT-OOB Carrier Board**



PANEL



Front View

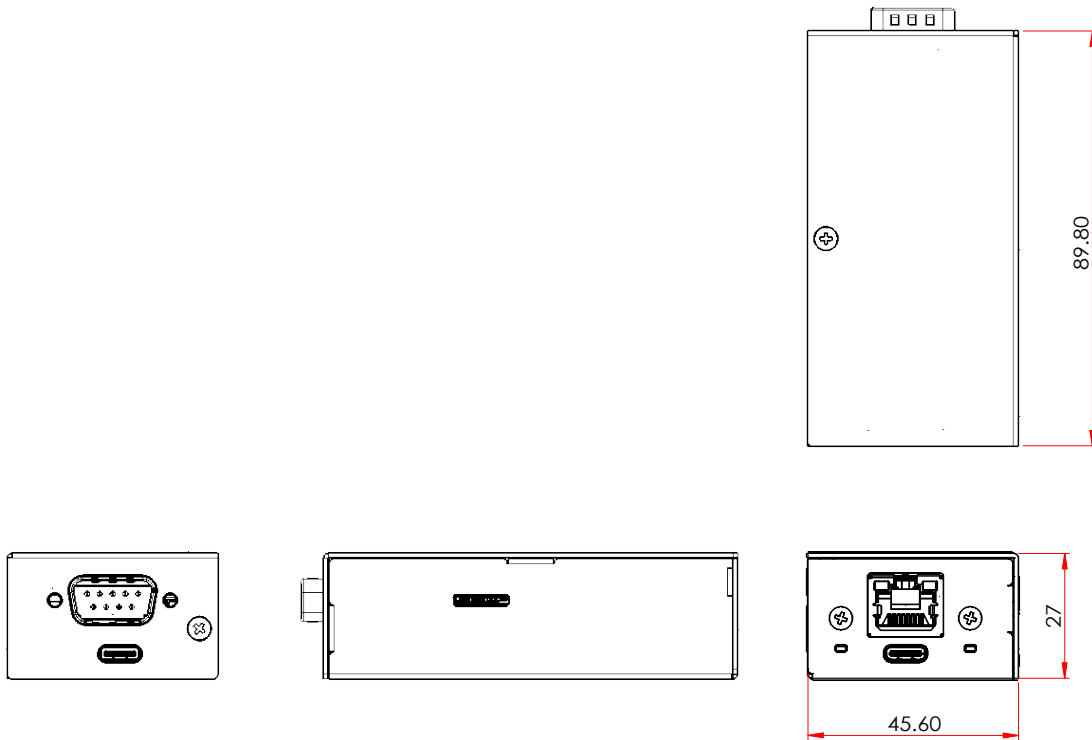


Rear View



Flank View

MECHANICAL DRAWING



SPECIFICATION

Out-Of-Band Monitoring and Management Functions	Processor	Nuvoton NUC980DK71YC (LQFP-128, 128MB DDR2)
	Power Cycling	<ul style="list-style-type: none"> Enforcement Shutdown Power Switch On / Off Reset
Signal Interface	Connector	Proprietary M.2 Pin Definition by DFI
	Factory Reset	Factory Reset Button (5 Seconds Pressed)
	Configuration Lock	2 DP switch (default: both disabled)
	Storage	128MB SPI NAND Flash Micro SD Slot (Co-layout with optional eMMC)
	LED Indicator Lights	MCU Activated
Environment	Operating Temperature	-5 to 65°C (On Industrial Motherboard)
	Operation Humidity	5 to 90% (Non-condensing)
	Storage Temperature	-40 to 85°C
	Certification	CE / FCC / RoHS & REACH Compliant
Mechanical	Dimensions	89.80 x 45.60 x 27mm

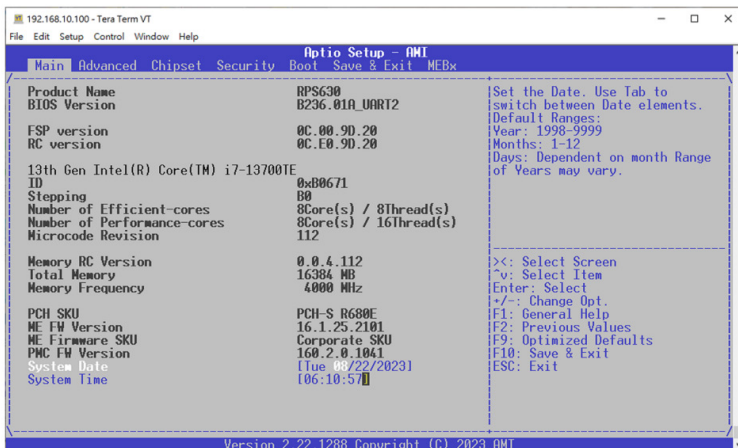
ORDERING INFORMATION

Model Name	Part Number	Description
RM101-OOB	750-RM1010-000G	OOB box for M2A-OOB with EXT-OOB Carrier, DB9 Input, USB type C power
RM101-OOB	750-RM1010-100G	OOB box for M2A-OOB with EXT-OOB Carrier, DB9 Input, USB type A power

PACKING LIST

• 1 System unit	
• 1 COM cable (Length: 200mm)	A81-015127-054G
• 1 USB power cable (Length: 200mm)	
- 00G (USB TYPE C to USB TYPE C)	A81-001200-017G
- 100G (USB TYPE A to USB TYPE C)	A81-001199-017G

BASIC FUNCTION



Remote power on / off & reset control

Remote BIOS setup & UEFI shell (Serial over LAN)

Remote BIOS update (SOL & DFI USB-Storage)

Optional Remote Recovery OS Image (UEFI text mode)